

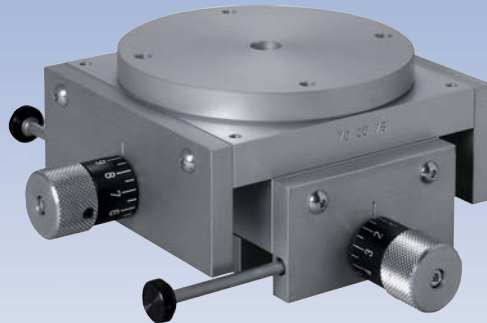
MG 0
KT 50
KT 30
KT 10



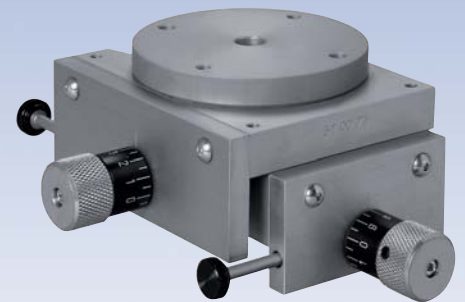
MG 0



KT 50



KT 30



KT 10

MG 0
KT 50

COORDINATENTISCH
COORDINATE TABLE

KT 30
KT 10

COORDINATENTISCH
COORDINATE TABLE

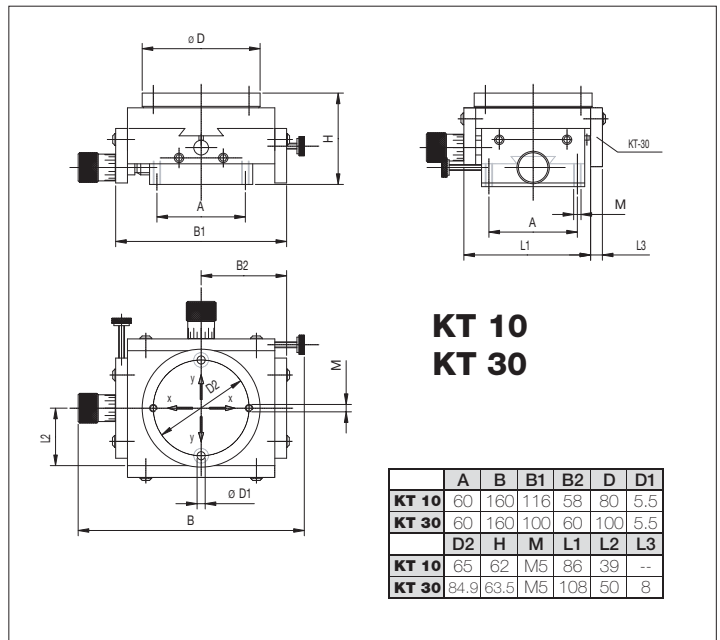
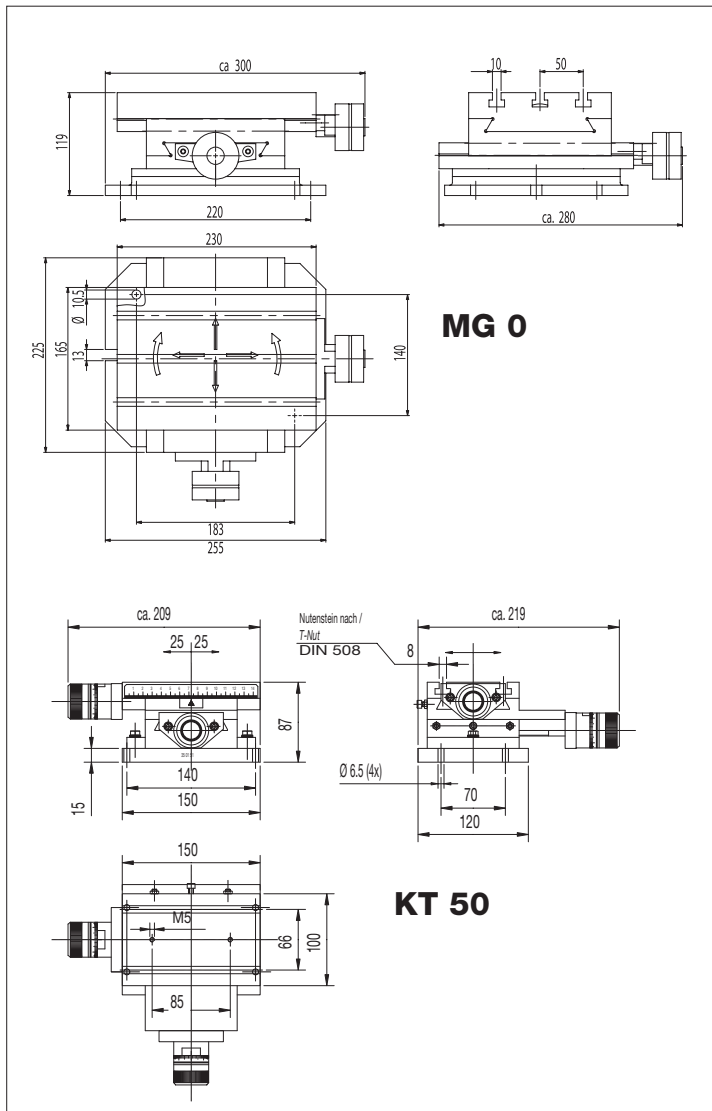
 **Teca-Print**
 **Teca-Print**

TECHNISCHE DATEN	MG 0	KT 50
1. Verstellbar	x, y, und z-Achse	x, y, und z-Achse
x-Achse:	+/- 60mm	+/- 25mm
y-Achse:	+/- 55mm	+/- 25mm
z-Achse:	360° schwenkbar	360° schwenkbar
2. T-Nut für Nutenstein DIN508:	10	8
3. Gewicht:	20kg	8,5kg
4. Bestellnummer Koordinatentisch:	# 35 01 67	# 35 01 51

TECHNICAL DATA	MG 0	KT 50
1. Adjustable	x, y, and z-axis	x, y, and z-axis
x-axis:	+/- 60mm	+/- 25mm
y-axis:	+/- 55mm	+/- 25mm
z-axis:	360° rotation	360° rotation
2. T-nut for sliding block DIN508:	10	8
3. Weight:	20kg	8.5kg
4. Order number coordinate table:	# 35 01 67	# 35 01 51

TECHNISCHE DATEN	KT 30	KT 10
1. Verstellbar	x, y, und z-Achse	x, y, und z-Achse
x-Achse:	+/- 15mm	+/- 15mm
y-Achse:	+/- 15mm	+/- 5mm
z-Achse:	360° schwenkbar	360° schwenkbar
2. Gewinde in Tischplatte:	M5	M5
3. Gewicht:	1,7kg	1,4kg
4. Bestellnummer Koordinatentisch:	# 70 00 76	# 61 00 76
5. Drehvorrichtung mit Feinjustierung:	# 70 00 77	# 61 00 77
6. Befestigungsplatte GP 80:	# 89 80 07	

TECHNICAL DATA	KT 30	KT 10
1. Adjustable	x, y, and z-axis	x, y, and z-axis
x-axis:	+/- 15mm	+/- 15mm
y-axis:	+/- 15mm	+/- 5mm
z-axis:	360° rotation	360° rotation
2. Table board thread:	M5	M5
3. Weight:	1.7kg	1.4kg
4. Order number coordinate table:	# 70 00 76	# 61 00 76
5. Slewing mechanism with precise adjustment:	# 70 00 77	# 61 00 77
6. Fixing plate GP 80:	# 89 80 07	



www.padprinting.biz
www.tampographie.biz
www.tampondruck.biz
www.teca-print.com



Teca-Print

Teca-Print AG

Tel. +41 (0)52 645 2000

Tel. +41 (0)52 FON TECA

Postfach

Fax +41 (0)52 645 2102

Bohlstrasse 17

info@teca-print.com

CH-8240 Thayngen

teca-print.com

Technische Änderungen vorbehalten. Alle Massangaben in mm.

We reserve the right to make technical changes without prior notice.
All measurements in mm.

706 000 157/ 06.08